

REVOLUTIONIZING
THE **REGENERATIVE**
MEDICINE INDUSTRY

STATE-OF-THE-ART SCIENCE, DEVICES AND MEDICAL EQUIPMENT



PRPScience

ADVANCING THE FIELD OF REGENERATIVE MEDICINE

PRPSCIENCEMD.COM

561-510-6PRP (6777)

Welcome to PRP Science and the very exciting world of regenerative medicine. Whether you have been using PRP for many years or you are new to the experience it is important to stay current with the scientific literature that is helping us to define and explore the efficacy of PRP.

I have been treating patients and training physician's to use PRP since 2010 and have used nearly all the PRP systems sold in the US today. I am thrilled to know that there is a recent Call for Standards by clinicians and scientists.

This "Call for Standards" is a result of the confusion in the marketplace. The fact is, not all PRP is equal in effectively recruiting mesenchymal stem cells, initiating angiogenesis or creating the maximum regenerative potential. Many of the devices being used today to satisfy consumer demands do not meet the scientific definition of "Platelet Rich Plasma" and do not provide a consistent robust enough PRP to accomplish best patient outcomes.

My commitment to you and to my patients is to stay well informed as the science advances and provides "best practice" information regarding the best PRP cellular components and concentrations. PRP Science will move with this science to offer the equipment necessary to meet the standards.

The Emcyte System currently being offered by PRP Science is the most flexible system in the marketplace. Purchasing this system assures that you will have at your fingertips many different options to create the PRP you desire and to evolve and grow with the science of PRP.

I am honored to be at your service as you advance the use of PRP in your practice. I look forward to our clinical collaboration. My hope is that together we can find many creative ways to use PRP to benefit our patients.

PRP Science helps physicians provide advanced treatment options using state-of-the art science, devices, and medical equipment that are revolutionizing the regenerative medicine industry. Platelet Rich Plasma (PRP) technology has been around for many years, but not all PRP devices are created equal. The unwavering commitment of PRP Science is to provide the highest quality processing system, devices and supportive products that set the standard in excellence for autologous biologics.

Physicians are flocking to learn more about PRP and all the benefits the science provides, not only to their patients, but to their practice as well. To meet these growing needs, PRP Science developed Studio PRP - an educational component offering superior training and curriculum for clinicians and staff. Clients receive hands on training with the most sophisticated technologies with our commitment to supply continuing education on the best practices for optimal patient outcome.

We could choose any PRP system to distribute, but other systems cannot match the platelet RICH plasma of the EmCyte system. EmCyte yields the highest amount of deliverable platelets. Other systems cannot adjust for hematocrit or leukocyte percentages and some automated systems have design flaws which cause laminar/turbulent flow problems that prematurely activate the platelets resulting in an early release of growth factors. These systems inherent to their design, disrupt the buffy coat and consistently have lower deliverable platelet counts in comparison to other competing systems during testing.

In addition, many companies do not offer independent laboratory analysis of their final product. That is an important factor into why all PRP and stem cell products are not created equal even though the manufacturers make statistical claims showing equal numbers.

The human body has a remarkable capacity to heal itself. Regeneration of new tissue is accomplished by the natural production of stem cells. Platelet-rich plasma (PRP) involves the application of concentrated platelets rich in bioactive proteins, which release growth factors to stimulate cellular regeneration and accelerate tissue repair. PRP was initially used in wound healing, dentistry and the treatment of sports injuries, but its use for treatment has now evolved to address aesthetic concerns and physiological dysfunction. PRP is one of the most advanced, effective natural treatments for cellular rejuvenation throughout the body.

The beauty of PRP is that it is autologous; blood is drawn from the patient and re-introduced back into the patient without reaction or rejection. PRP procedures are minimally invasive and, typically, patients experience very little discomfort and no down time.

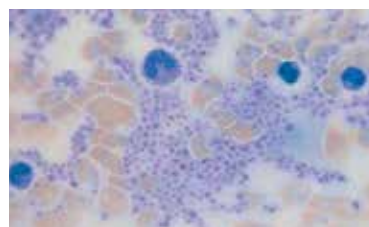
A PRP procedure can be completed within an hour. Blood is spun using a unique centrifuge that separates the plasma and platelets from the whole blood. A second spin results in highly concentrated plasma -rich in platelets that are collected in a syringe and injected back into the tissues where rejuvenation and regeneration is needed. Growth factors stimulate stem cells to create new, youthful tissue. PRP is the essence of regenerative medicine and research suggests that as the study of this treatment continues, PRP therapies eventually may be able to treat a myriad of medical conditions.

NOT ALL PRP IS THE SAME

PRP products differ both qualitatively & quantitatively. It is well documented that not all PRP is the same. Patients may experience varying outcomes with PRP applications. This can be attributed to the system that is used to prepare the PRP. To get the best results, the PRP system must significantly concentrate the platelet growth factors in the treatment sample. The better the concentration, the better the chances for recovery.



Normal Platelet Count



Concentrated Platelet Count

THE EXECUTIVE SERIES CENTRIFUGE II

The Executive Series Centrifuge II optimizes separation & enhances the buffycoat concentrate. The machine offers a full swinging bucket centrifugation that provides full vertical to horizontal separation in a smooth and unhindered motion. There is no platelet slip phenomenon. With soft braking technology the acceleration and deceleration are both controlled to prevent the buffycoat from re-suspending into the plasma after separation.

GenesisCS is a closed system throughout. Trapping blood within a water tight sealed environment maximizes the safety of the contents and ensures sterility throughout processing.



16X PLATELET CONCENTRATIONS IN 7ML

Over 16 billion platelets delivered in 7mL no red blood cells.

The most powerful tabletop system available.

A therapeutic treatment with resounding capabilities.



VERTICAL SIDE PORT WITH SELF SEALING SWABBABLE VALVE PORT

CLOSED AND STERILE ENCLOSURE DURING ALL STEPS OF PROCESSING
REQUIRES NO CAPS TO MAINTAIN STERILITY
NO CENTRIFUGAL AEROSOLIZATION, ELIMINATING BUCKET CAPS
IMPROVED DEVICE HANDLING

CONICAL ASPIRATING DISC

REDUCE RBC CONTAMINATION DURING ASPIRATION

ROUNDED INTERIOR BASE

IMPROVES BUFFYCOAT RE-SUSPENSION

RBC FLUSH

THIS OPTIONAL STEP ENABLES USER TO FLUSH RESIDUAL RBC WITH 1.5ML ACSC
TO FURTHER REDUCE RBC CONTENT IN PURE PRP®

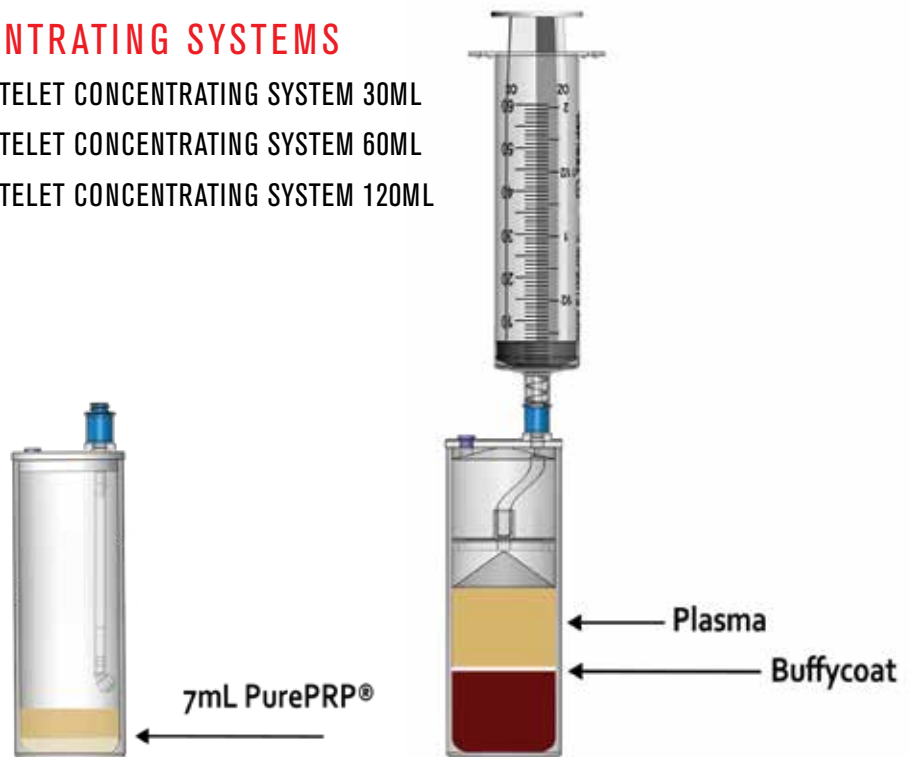


“PurePRP® & PureBMC® are registered trademarks of EmCyte Corporation and are patent pending processes. All rights reserved. US patent#: 7976796, 6835353”

The NEW Pure PRP II (2015) system is revolutionary. The upgraded system makes processing Pure PRP easier, faster and smarter. It is the only tabletop point of care system in its class to provide platelet concentrations of up to 16x baseline in 7mL of Pure PRP. This results in a delivery of over 16 billion platelets to the treatment site, which is 3 to 4 times greater than the nearest competitor in the same volume of PRP. All delivered with the fewest amount of red blood cells in less than 10 minutes of processing. When compared to other leading brands. Pure PRP II offers the highest concentrations of platelets and the largest volume of deliverable platelets in a 7 mL treatment sample.

PURE PRP CONCENTRATING SYSTEMS

- GS30-PURE II PURE PLATELET CONCENTRATING SYSTEM 30ML
- GS60-PURE II PURE PLATELET CONCENTRATING SYSTEM 60ML
- GS120-PURE II PURE PLATELET CONCENTRATING SYSTEM 120ML



PROTOCOL A

Protocol A processes Pure PRP® without red blood cells or neutrophil granulocytes. This protocol is used when powerful healing without inflammatory activity is required at the application site. This protocol is also the low viscosity solution to a viable PRP product, providing very high concentrations of platelets in a bath of non-viscous plasma. This protocol has also been reported to reduce the potential for pain at the application site. It is the most frequently used protocol.



LOW INFLAMMATORY PRP
HIGHER PLATELET COUNT
LOW GRANULOCYTE
LOW VISCOSITY
LESS THAN 1% HCT

PROTOCOL B

Protocol B processes Pure PRP® with low red blood cell counts and very high cytokine activity and neutrophil cell recoveries. This protocol is used when the phagocytic powers of neutrophils are needed to help fight infectious processes at the application site. This protocol produces the highest chemoattractant activity and significantly increases regeneration potential. Once the neutrophils have completed phagocytosis, they become apoptotic cells and are subsequently removed, thereby also eliminating the inflammatory activity.



INFECTION FIGHTING PRP
WITH INCREASED CYTOKINES
HIGHER PLATELET COUNT
HIGH NEUTROPHIL GRANULOCYTES
MODERATE VISCOSITY
HCT LESS THAN 20%

“PurePRP® & PureBMC® are registered trademarks of EmCyte Corporation and are patent pending processes.
All rights reserved. US patent#: 7976796, 6835353”

LOWEST RED BLOOD CELLS (RBCS) CONTENT AVAILABLE

The NEW Pure PRP® stays true to its technology and superior benefits, providing high concentrations of platelet & growth factors in a pure plasma suspension with less than .2 10⁹/mL red blood cells. Red blood cells in PRP increases viscosity, making application more difficult for many physicians. Red blood cells in PRP has also been reported to cause pain and subsequent inflammation.

NO PH BUFFERING REQUIRED. PURE PRP® HAS NORMAL PH

Pure PRP® is the ONLY PRP system that consistently provide PRP at a normal pH, without the need for buffering. Most PRP systems provide acidic PRP (pH <7.35) which requires buffering prior to application. Without buffering acid PRP can increase pain and discomfort at the application site. Pure PRP® eliminates the discomfort and improves the patient outcome making it the Perfect State-Of-The-Art .

AN INDEPENDENT REVIEW OF PURE PRP® VS OTHER LEADING BRANDS

Principle Investigator(s): Dr. Robert Mandle Ph.D. • BioSciences Research Associates, Inc. • Pure PRP® vs SmartPREP2®, March 12, 2013

Platform	Platelet x 10 ⁶ /ml	Recovery	Concentration	Hct (%)	pH in PRP	PRP volume (mL)
Pure PRP®	1128 (319)	76% (4)	6.7 (0.3)	1.1 (0.6)	7.5 (0.1)	6.6 (0.2)
SmartPREP2 APC60	1075 (262)	69% (11)	6.9 (0.9)	34.1 (12)	6.8 (0.1)	6.9 (0.2)

Principle Investigator(s): Dr. Robert Mandle Ph.D. • BioSciences Research Associates, Inc. • Pure PRP® vs Angel Whole Blood Separation System, March 7, 2014

Platform	Platelet x 10 ⁶ /ml	Recovery	Concentration	Hct (%)	pH in PRP	PRP volume (mL)
Pure PRP®	1067.6 (253)	68% (9.8)	6.9 (0.7)	2.8 (1.9)	7.44 (0.1)	7.4 (0.4)
Angel PRP	774 (324)	46% (6.3)	4.7 (0.7)	3.3 (0.7)	7.17 (0.7)	6.9 (0.2)

A product of EmCyte Corporation, Fort Meyers, FL 33912

Pure PRP & Pure BMC are registered trademarks of EmCyte Corporation. All rights reserved. U.S. Patent#: 7976796, 6835353

THE ABSOLUTE-PRP CONCENTRATING SYSTEM

AbsolutePRP provides the complete PRP composition; therapeutically high concentrations of platelets and growth factors along with very high concentrations of neutrophils, monocytes and other cell mediating cytokines. AbsolutePRP is the fastest and most efficient single spin 60mL concentrating systems available. Prepare 7mL of PRP, with high concentrations of regenerative cells, in a SINGLE 5 MINUTE SPIN. These systems were designed to accommodate physicians that run a busy practice and mandate superior performance outcomes that is consistent and reliable.

GS30 - PLATELET CONCENTRATING SYSTEM 30ML

GS60 - PLATELET CONCENTRATING SYSTEM 60ML

GS120 - PLATELET CONCENTRATING SYSTEM 120ML

5 minute spin.

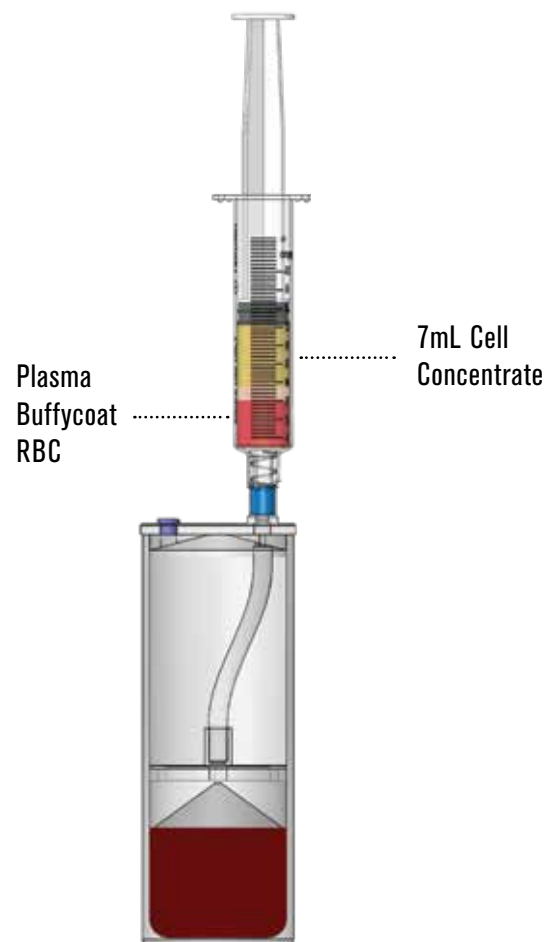
Quickest standard spin time in the market.

7ML ABSOLUTEPRP FROM 60ML WHOLE BLOOD

7mL PRP	Yield	Concentration
Platelets	78%	6.7
WBC	89%	7.4
Monocytes	81%	7.3
Neutrophils	87%	8.2

HCT 49%

Performance Data: BSR Associates Inc
767c Concord Ave • Cambridge, MA
March, 2015



THE ABSOLUTE-BMC CONCENTRATING SYSTEM

The AbsoluteBMC Concentrating System has been re branded from the former 544e. AbsoluteBMC provides significant concentrations of CFU-F, CD34+, and total nucleated cell counts. CD34+ are cell markers for hematopoietic stem cells. These are the primary multipotent cells that replenishes all blood cell types. These cells are crucial for the regenerative processes needed for active tissue repair. In addition to these cells are CFU-F, which are representative of mesenchymal stem cells. Mesenchymal stem cells (MSC) are multipotent stromal cells that can differentiate into a variety of cell types, including cartilage, bone and adipose cells. AbsoluteBMC provide therapeutic concentrations of these cell types which is the key to desirable patient outcomes. AbsolutePRP is the fastest and most efficient single spin 60mL concentrating systems available. Prepare 7mL of BMC, in a SINGLE 5 MINUTE SPIN.

GSBMA30 - ABSOLUTE BMC BONE MARROW CONCENTRATING SYSTEM 30ML

GS6BMA60 - ABSOLUTE BMC BONE MARROW CONCENTRATING SYSTEM 60ML

GSBMA120 - ABSOLUTE BMC BONE MARROW CONCENTRATING SYSTEM 120ML



7ML ABSOLUTE BMC FROM 60ML WHOLE BLOOD

7mL PRP	Yield	Concentration
CD34+	73%	5.8
CFU-F	84%	6.7
TNC	82%	6.5

HCT 49%

Performance Data: BSR Associates Inc.
767c Concord Ave Cambridge, MA
March, 2015

PURE BMC CONCENTRATING SYSTEMS:

BC30-PUREBMC BONE MARROW CONCENTRATING SYSTEM 30ML

BC60-PUREBMC BONE MARROW CONCENTRATING SYSTEM 60ML

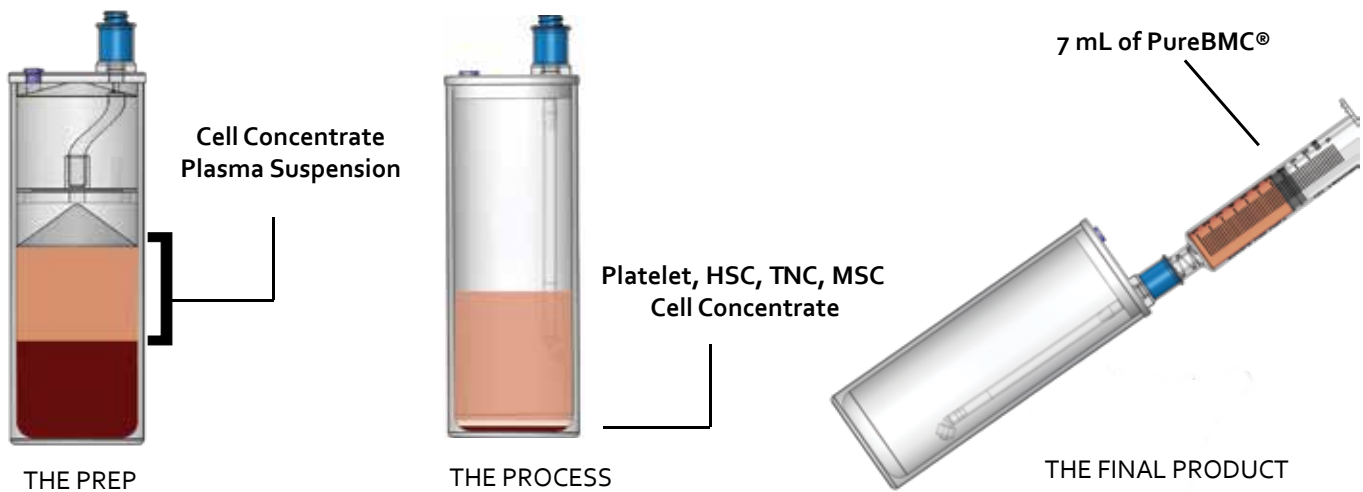
PUREBMC® IS BETTER THAN EVER

PureBMC® is better than ever and remains the flawless solution to Bone Marrow Cell Concentrate. PureBMC® processes BMC in a system that remains closed and sterile throughout all steps of processing. This is especially important when processing in a surgical suite. It is also proven to concentrate viable platelets, hematopoietic stem cells (HSC), total nucleated cells (TNC) and mesenchymal stem cells (MSC) in a bath of plasma with a low hematocrit. PureBMC® can be prepared with or without Heparin, either way it provides viable platelet concentrates that further add to the strength of the cell composition. PureBMC® delivers the excellence and reliability physicians can depend on.

PureBMC® provides selectable sample volumes ranging from 3mL to 14mL. No matter what the sample size, PureBMC® provides clinical cell counts that exceed industry standards.

ONGOING PERFORMANCE ANALYSIS REPORT CAMPAIGN

See the Ongoing Performance Analysis Report Campaign, for PureBMC® at www.emcyte.com for the “always current” and up-to-date analysis of the performance of the PureBMC® system. This system was developed to provide objectivity and transparency in the clinical performance of the EmCyte systems. To be a participant in a sample submission, call 239-481-7725, or visit the website for more information. The data provided in the Ongoing Performance Analysis Report Campaign is independently reviewed at a reputable laboratory.



"PurePRP® & PureBMC® are registered trademarks of EmCyte Corporation and are patent pending processes.
All rights reserved. US patent#: 7976796, 6835353"



QUICKDRAW DELIVERY SYSTEM WITH MALLEABLE OR DUAL SPRAY

The QuickDRAW Delivery System is a state of the art delivery system that contain proprietary valve ports that permit simultaneous filling and delivery of the PRP plus activator. The system comes with a malleable spray tip or a dual spray tip. The dual spray tip permits activation at the delivery site and not in the device. This allows the delivery system to be used leisurely without clotting at the tip.



BIOSYNTHETIC BONE

FDA cleared sterile resorbable granule bone graft composed of purified fibrillar type I collagen, 60% hydroxyapatite and 40% tricalcium phosphate. The device is safe and has excellent biocompatibility. After implantation, the graft resorbs and is later replaced by natural bone. Comes in 5cc strip or 10cc strip



TABLETOP DEVICE HOLDER

The Tabletop Device Holder accommodates four 60mL concentrating devices. The Device Holder permits hands free operation and help to maintain stability while operating the concentrating device.



PUREPRP® II PROTEIN CONCENTRATING SYSTEM

The EmCyte Plasma Concentrator contains a 7mL concentrating chamber with microfiber filaments that quickly and accurately concentrates the plasma proteins. This system electively concentrates ALL plasma proteins, including albumin, a2-macroglobulin, fibrinogen, regulatory proteins and clotting factors. Approximately 60mL of plasma can be concentrated down to 13mL in less than five minutes without centrifugation.

PRODUCT SPECIFICATIONS

PRODUCT NUMBER	DESCRIPTION	PACKAGE QUANTITY
	Kit Disposables	
GS30-PURE-II	PurePRP® II 30mL	20/case
GS60-PURE-II	PurePRP® II 60mL	20/case
GS120-PURE-II	PurePRP® II 120mL	16/case
BC30-PURE	PureBMC® 30mL	16/case
BC60-PURE	PureBMC® 60mL	16/case
GS30	AbsolutePRP 30mL	20/case
GS60	AbsolutePRP 60mL	20/case
GS120	AbsolutePRP 120mL	16/case
GSBMA-30	AbsoluteBMC 30mL	16/case
GSBMA-60	AbsoluteBMC 60mL	16/case
GSBMA-120	AbsoluteBMC 120mL	16/case
FC120-PURE	PurePRP® with Protein Concentrator 120mL	16/case
	Accessories	
QDS11-1	QuickDRAW Delivery System Malleable Spray	24/case
QDS11-2	QuickDRAW Delivery System Dual Spray	24/case
	Synthetic Bone Strips	
BF2-50x10-05	Synthetic Granules in Collagen Matrix (HA-TCP) 5cc	5cc – 2 strips
BF1-100x25-15	Synthetic Granules in Collagen Matrix (HA-TCP) 10cc	10cc – 1 strip
	Equipment	
GS-022624340	Executive Series Centrifuge II	1/each each
PLB-60-TTB	Tabletop Aluminum Device Holder	1/each each

PELVIC BOWL REHABILITATION

The Science

InControl Medical products are specifically designed to enhance human physiology by using science to strengthen the muscles of the pelvic floor.

InControl Medical products were scientifically designed with more than 29 patents to treat the cause of bladder or bowel leakage. In the vast majority of cases, bladder and bowel leakage stems from weak pelvic floor muscles and sphincters. InControl products strengthen those muscles and sphincters to their original youthful tone by exercising them in a robust and efficient manner.



APEX M PELVIC EXERCISE (WOMEN)

ApexM is an FDA Class II medical device that stops overactive bladder and cures Stress Incontinence (leaking when you cough, laugh, sneeze or exercise) by strengthening the pelvic floor muscles that allows you to squeeze your urethra, stopping any unwanted leakage.



INTENSITY INTIMATE HEALTH DEVICE (WOMEN)

Intensity improves your pelvic floor tone while helping with anorgasmia, lack of lubrication and more! It does not require a prescription.



INTONE PELVIC EXERCISER (WOMEN)

Intone cures all forms of advanced urinary incontinence in women, is guaranteed to work, is prescribed by your physician and requires physician participation.

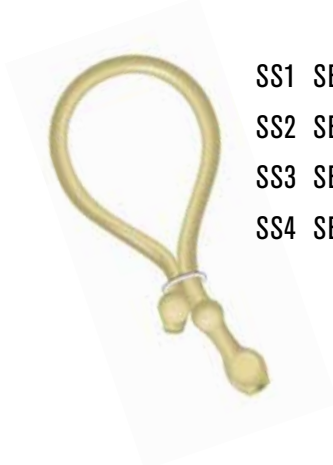


INTONE MV (MALE UI OR MALE & FEMALE FECAL INCONTINENCE)

IntoneMV cures bowel leakage in men and women, is guaranteed to work, is prescribed by your physician and requires physician participation.

VED VACUUM ERECTION DEVICE

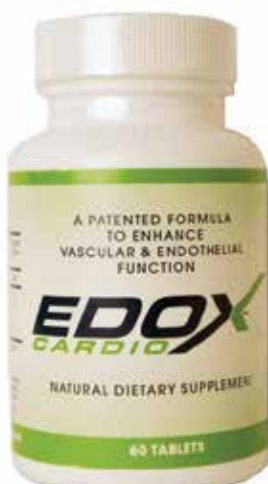
Erection therapy uses today's most advanced medical technology in order to mimic the body's natural processes and help men overcome Erectile dysfunction in order to return to a healthy, satisfying sex life. The battery operated cylinder device includes sensation seals and three sizes of constriction rings.



- SS1 SENSATION SEAL - SIZE 1
- SS2 SENSATION SEAL - SIZE 2
- SS3 SENSATION SEAL - SIZE 3
- SS4 SENSATION SEAL - SIZE 4



VACUUM ERECTION DEVICE
(BATTERY OPERATED)



EDOX

Natural Dietary Supplements to Enhance Sexual Wellness

Sexual wellness begins from within. Erectile dysfunction is often a progressive condition that begins occasionally but becomes more frequent over time. Edox™ is a safe natural supplement special formulated and patented to improve sexual performance.

CSEDOX EDOX (60 TABLETS) 18 PER CASE

CSEDOX-CARDIO EDOX-CARDIO (60 TABLETS) 18 PER CASE



DERMA PEN

The Dermapen 3™ takes all the advantages of our older devices, leaving behind any shortcomings, and incorporates it all into an automated device that is able to produce over 1,300 micro holes in the skin per second, making the Dermapen 3™ more effective than dermal rollers, dermal stamps, and various other automated needling devices.

The Dermapen 3™ features 12 needle points in each of its tips and a stronger, smoother, more robust motor capable of delivering nearly 110 revolutions per second (108 revs per second, to be exact) at its highest setting. The depth of penetration is fully adjustable between 0 to 2.5 mm to accommodate any region of the body and face. The superior AOVN™ technology of the Dermapen 3™ allows for smooth, drag-less operation and optimal results.

- DERMA3 MICRO NEEDLE HAND HELD DEVICE
- DERMANDL30 DERMAPEN3 REPLACEMENT NEEDLES (30 BOX)
- DERMASLV15 DERMAPEN3 REPLACEMENT SLEEVES (15 BOX)

REJUVADERM GROWTH FACTOR SERUM

RejuvaDerm is a professional grade synergistic formulation of velvet antler extract, emu oil, jojoba and lavender oil that provides growth factors to stimulate skin cell repair.

- REJUVAPRP REJUVADERM GROWTH FACTOR SERUM (12 BOX)



LCPRO LASER CAP

The LaserCap LCPRO comes with a luxurious branded carry bag, baseball hat, battery pack, charger and a 3 year warranty



LASER CAP

The LaserCap LCPRO comes with a luxurious branded carry bag, baseball hat, battery pack, charger and a 3 year warranty.

LaserCap® LCPRO™ Laser light therapy improves cellular respiration and function by stimulating the hair follicle cells. Better breathing cells, make for a better functioning hair follicle which, in turn, produces a happier, healthier hair!

Until recently this technology was only available through in-office devices, in hair clinics. With LaserCap LCPRO patients can now take it home, making it a much more effective treatment.

LaserCap® LCPRO™ Features.

- Professional Hair Loss Medical Management
- No Side Effects, Non-surgical Solution
- Available Through Select Physicians
- 224 Laser Diodes For Optimal Power
- Full Scalp Coverage & Even Light Distribution
- Light Thin Fex Shell For Ultimate Comfort
- Portable, Easy To Use And Travel With
- Use At Home And Share With Family
- Made By LaserCap Company In Cleveland, Ohio
- Fda Cleared Medical Device



PRPScience

19646 DINNER KEY DRIVE
BOCA RATON, FL 33498

561-510-6PRP (6777)
FAX: 888-527-9697

INFO@PRPSCIENCEMD.COM
PRPSCIENCEMD.COM